



Rinie Young
072 886 4803
rinie@wmpg.co.za

Contact Secunda

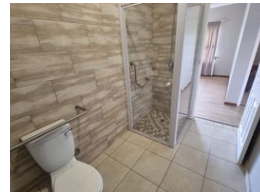
017 6311104

2 Andries Potgieter Street
Secunda
2302

NO TRANSFER DUTY



Web Ref RL4357



R799,000

2 1

Monthly Bond Repayment R8,247.19

Calculated over 20 years at 11% with no deposit.

Transfer Costs R25,898.00 **Bond Costs** R19,565.00

These calculations are only a guide. Please ask your conveyancer for exact calculations.

Monthly Levy R2,000 **Monthly Rates** R100

Well-kept 2-bedroom retirement unit with beautiful kitchen.

This property is a sectional title unit with 2 bedrooms, a bathroom, open plan lounge, kitchen & covered patio. The kitchen has lightwood finishes and is really eye catching. It includes a four-burner gas stove as well as a corner pantry and a double zinc.

The kitchen has a washing machine / dishwasher connection point and ample space for any size fridge/freezer.

The lounge is spacious and open plan with the kitchen. The lounge has a sliding door which opens on a patio where you can overlook a lovely well-kept garden.

Call Rinie to hear more about the retirement village and what it offers.

The retirement village offers a community hall with the following facilities:

Hair salon
Gymnasium
Library
Lounge
Restaurant
Entertainment area
Hall for functions / church services
Consulting rooms for Doctors Nurses,...

Features

Interior

Bedrooms	2
Bathrooms	1
Kitchens	1
Recep. Rooms	1
Furnished	No

Exterior

Security	Yes
Pool	No
Views	True

Sizes

Floor Size	58m ²
Land Size	58m ²

Extras

Built-in Wardrobes Security 24 Hour Access 24 Hour Response Blinds Dishwasher Connection
Curtain Rails Piped Gas Sliding Doors Washing Machine Connection Patio Extractor Fan