



**Rinie Young**  
072 886 4803  
rinie@wmpg.co.za

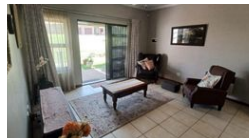
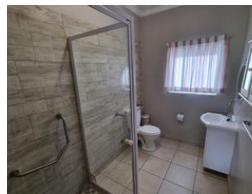
Contact Secunda

017 6311104

2 Andries Potgieter Street  
Secunda  
2302



Web Ref RL4356



**R830,000**

**Monthly Bond Repayment** R8,567.16  
Calculated over 20 years at 11% with no deposit.

**Transfer Costs** R28,244.00 **Bond Costs** R21,450.00

These calculations are only a guide. Please ask your conveyancer for exact calculations.

**Monthly Levy** R2,400 **Monthly Rates** R150

2 Bedrooms 1 Bathroom 1 Garage

Well-kept 2-bedroom retirement unit with a garage & carport.

This property is a sectional title unit with 2 bedrooms, a bathroom, open plan lounge, kitchen & covered patio. The kitchen is modern with dark grey finishes, a four-burner gas stove as well as a corner pantry and a double zinc. The kitchen has a washing machine / dishwasher connection point and ample space for any size fridge/freezer. The lounge is spacious and open plan with the kitchen. The lounge has a sliding door which opens on a patio where you can overlook a lovely well-kept garden. This specific unit comes with a garage and a carport. Call Rinie to hear more about the retirement village and what it offers. The retirement village offers a community hall with the following facilities:  
Hair salon  
Gymnasium  
Library  
Lounge  
Restaurant  
Entertainment area  
Hall for functions / church services  
Consulting...

## Features

Interior		Exterior		Sizes	
Bedrooms	2	Garages	1	Floor Size	58m <sup>2</sup>
Bathrooms	1	Carports / Parkings	1	Land Size	58m <sup>2</sup>
Kitchens	1.5	Security	Yes		
Recep. Rooms	1	Pool	No		
Furnished	No	Views	True		

### Extras

Built-in Wardrobes Security 24 Hour Access 24 Hour Response Burglar Bars Electric Garage  
Curtain Rails Dishwasher Connection Communal Braai Area Fan Electric Garage Paveway  
Piped Gas Medical Care Open Plan Security Gate Covered Parking